

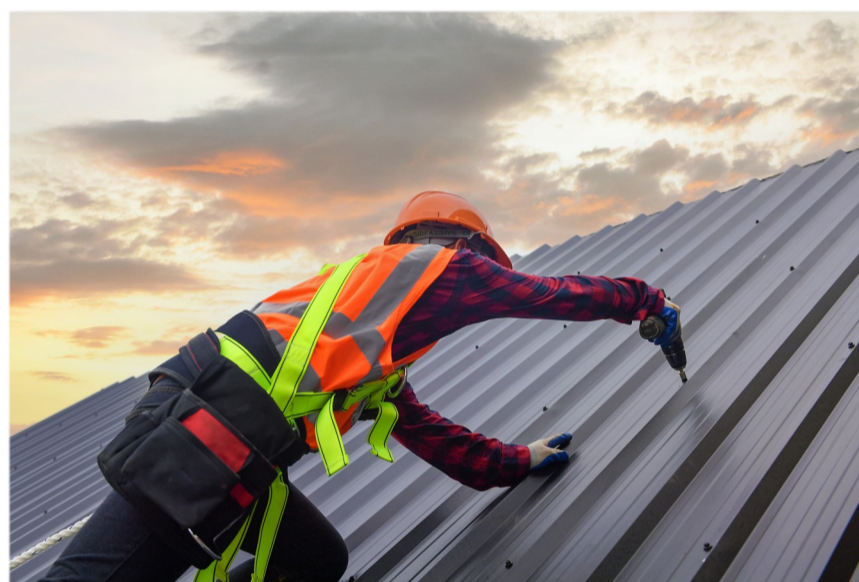
Location
Idaho

2026 Est. Revenue
\$3,200,000

2026 Est. EBITDA
\$798,000

BUSINESS HIGHLIGHTS

For nearly 50 years, the Company has excelled at fabricating and installing roofing (62% of 2025 sales), custom metal rain gutters (35%), and siding (3%). The Company has long-standing relationships with numerous contractors, where a majority of work originates. Architects and contractors often spec in the Company's product lines in to designs, and the Pacific Northwest climate contributes to a steady stream of business.



INVESTMENT APPEAL

- **Diversified Customer Base:** No single customer accounted for more than 5% of revenue during the historical period. The diversified customer base helps ensure that the Company will not be significantly impacted by the loss of a single account.
- **Significant Geographic Market Growth:** The population in the Company's geographic market has grown by over 10% in recent years.
- **Superior Name and Reputation:** The Company enjoys a long-standing reputation for the quality of its products and services, expertise, dependability, and superior customer support.
- **Modest Ongoing Capital Investment Requirements:** Management does not expect a significant investment in capital assets to be required over the pro forma period.

Randy Limani / Seth Ruhter
Senior M&A Advisors
rlimani@generational.com
sruhter@generational.com

208-639-6172
208-639-6167



THE M&A ADVISOR
INVESTMENT BANK
OF THE YEAR
2022 - 2024 - 2025

Generational Equity, LLC
3400 N. Central Expressway, Ste. 100
Richardson, TX 75080
Fax: 972-392-8564