

EAGLE ROAD PROFESSIONAL CENTER

3090 GENTRY WAY | MERIDIAN, IDAHO

1,879 RSF PROFESSIONAL OFFICE OR MEDICAL SPACE

LEASED



Building owned and managed by
HEALTHCARE REALTY

ARTHUR BERRY & COMPANY



250 W Bobwhite Ct Suite 230
Boise, Idaho 83706

208-336-8000

www.arthurberry.com

SUITE 150

3090 GENTRY WAY | MERIDIAN, IDAHO

AVAILABLE: 1,879 RSF Professional Office or Medical Space

LEASE RATE: Contact Agent

NNN CHARGES: Contact Agent (NNN Expense includes Power)

TI ALLOWANCE: Negotiable

APPOINTMENT REQUIRED

Please contact Arthur Berry & Company for showing instructions.

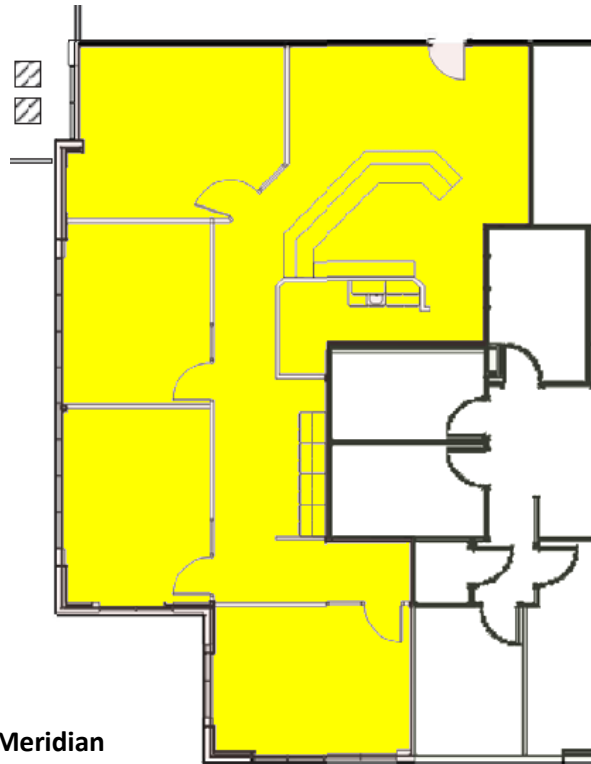
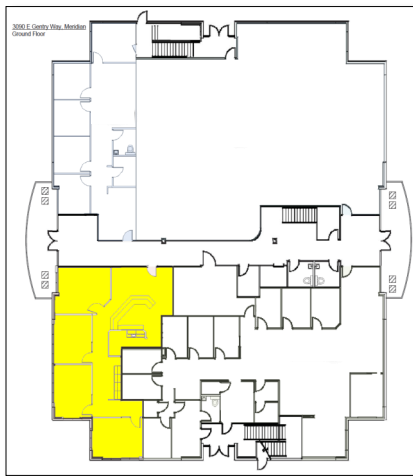
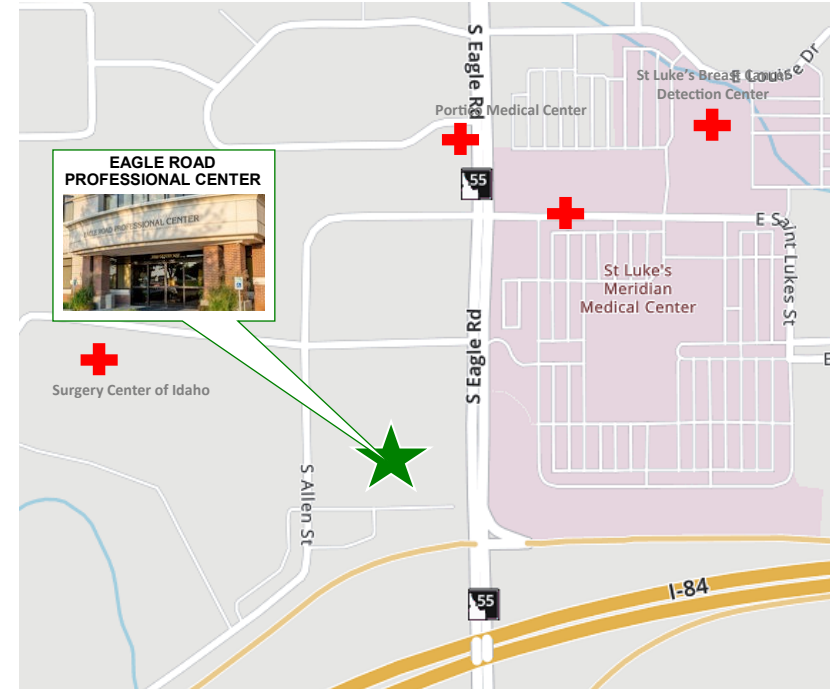
ARTHUR BERRY & COMPANY



250 W Bobwhite Ct Suite 230
Boise, Idaho 83706

208-336-8000

www.arthurberry.com



Ground Floor - 3090 Gentry Way, Meridian

- Class A Building across from St. Luke's Meridian
- Professionally Managed
- High Standard of Maintenance
- Plenty of On-site Parking
- Easy Freeway Access
- Generous Tenant Improvement Allowance for Medical Office Tenant

Building owned and managed by
HEALTHCARE REALTY



EAGLE ROAD PROFESSIONAL CENTER

St Luke's

3080

3090

PARKING AREA



ARTHUR BERRY & COMPANY



250 W Bobwhite Ct Suite 230
Boise, Idaho 83706
208-336-8000
www.arthurberry.com



Building owned and managed by
HEALTHCARE REALTY