

# CURTIS BUSINESS PLAZA

1070 N CURTIS ROAD | BOISE, IDAHO

*Across from St. Alphonsus Regional Medical Center!*



**SUITE 145**

**582 NRSF MEDICAL OR PROFESSIONAL OFFICE SPACE**

**SUITE 210**

**1,935 NRSF MEDICAL OR PROFESSIONAL OFFICE SPACE**

**SUITE 220**

**1,920 NRSF MEDICAL OR PROFESSIONAL OFFICE SPACE**

**SUITE 270**

**+/-1,250 NRSF MEDICAL OR PROFESSIONAL OFFICE SPACE**

Building owned and managed by  
**HEALTHCARE REALTY**

**ARTHUR BERRY  
& COMPANY**

250 W Bobwhite Ct Suite 230  
Boise, Idaho 83706

**208-336-8000**

[www.arthurberry.com](http://www.arthurberry.com)

# SUITES 145, 210, 220 and 270

1070 N CURTIS RD | BOISE, IDAHO

**AVAILABLE:** 592 NRSF Medical/Professional Office (Suite 145)  
1,935 NRSF Medical/Professional Office (Suite 210)\*  
1,920 NRSF Medical/Professional Office (Suite 220)\*  
+/- 1,250 NRSF Medical/Professional Office (Suite 270)

**LEASE RATE:** Contact Agent  
**NNN CHARGES:** Contact Agent  
**TI ALLOWANCE:** Negotiable

\*Suites 210 and 220 may be combined

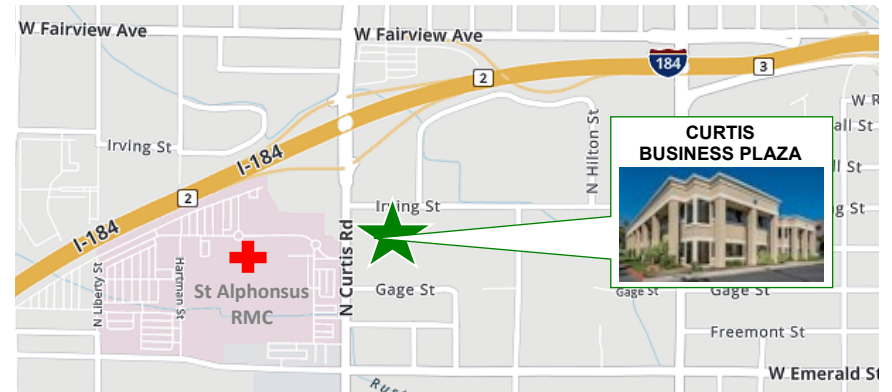
**ARTHUR BERRY  
& COMPANY**



250 W Bobwhite Ct Suite 230  
Boise, Idaho 83706

208-336-8000

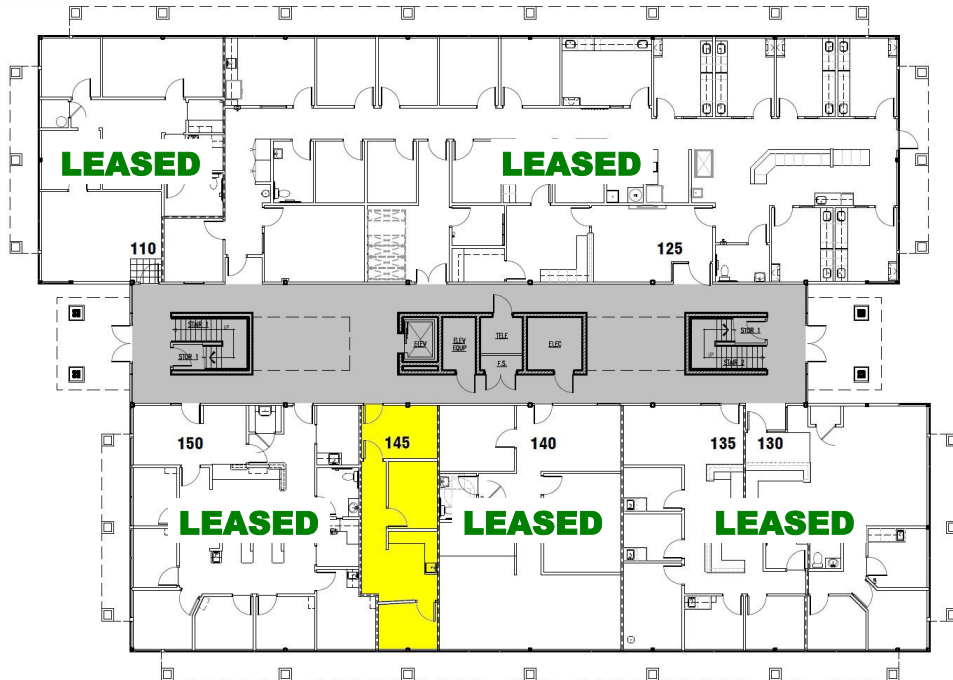
www.arthurberry.com



- Suite 145 Rarely Available Small Suite
- Suite 210 Corner Office with Lots of Windows
- Suite 220 Medical Space Currently
- Plenty of On-site Parking
- Easy Freeway Access
- Generous Tenant Improvement Allowance for Medical Office Tenant

Building owned and managed by  
**HEALTHCARE REALTY**

## CURTIS BUSINESS PLAZA



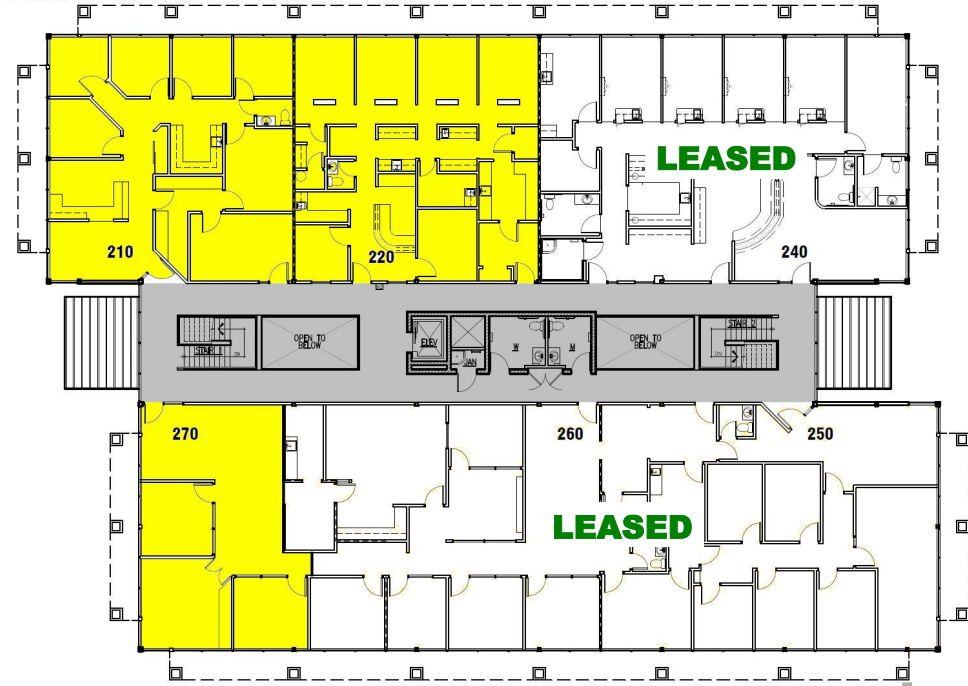
**FIRST FLOOR PLAN**

SCALE: 1/16" = 1'-0"

8-27-19



## CURTIS BUSINESS PLAZA



**SECOND FLOOR PLAN**

SCALE: 1/16" = 1'-0"

8-27-19

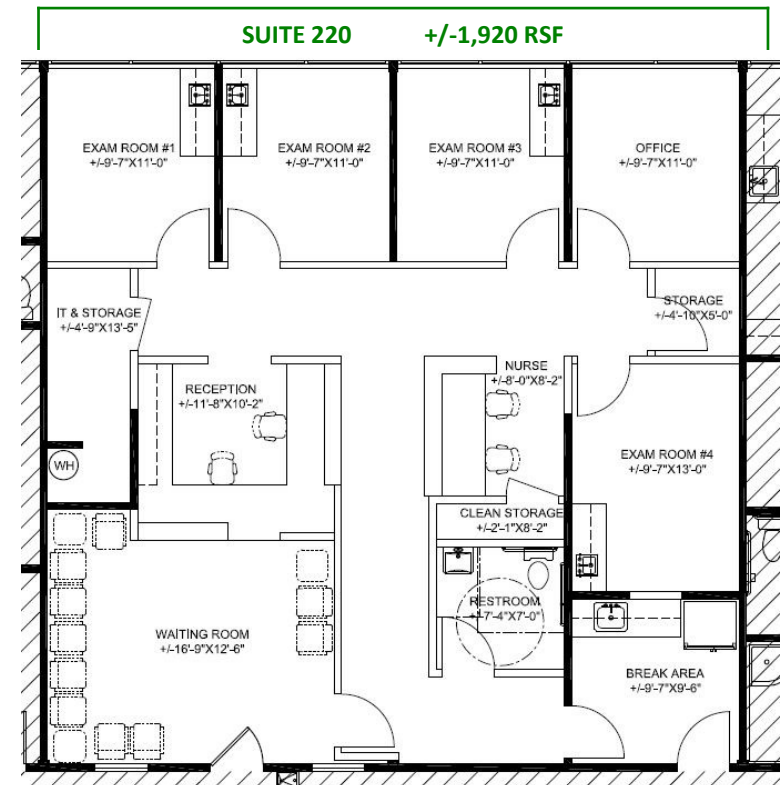
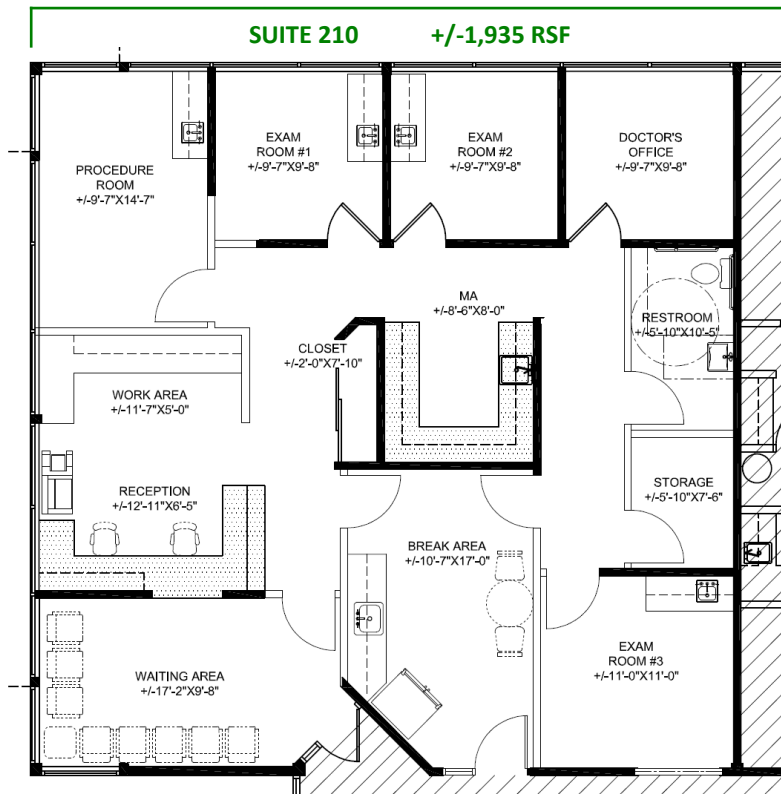
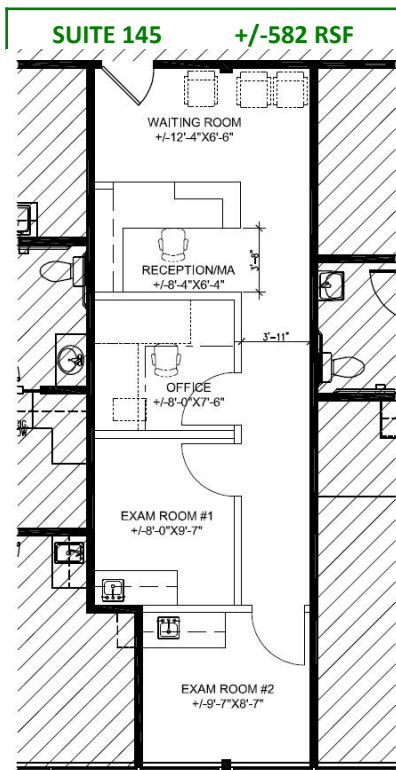




# CONCEPTUAL MEDICAL CLINIC FLOOR PLANS

Open to Tenant-suggested Modifications to Conceptual Plan

Contact Agent for Tenant Improvement Allowance for  
Conceptual Medical Use Space Plan







 Saint Alphonsus

CURTIS BUSINESS PLAZA

PARKING AREA



ARTHUR BERRY  
& COMPANY

250 W Bobwhite Ct Suite 230  
Boise, Idaho 83706

208-336-8000

[www.arthurberry.com](http://www.arthurberry.com)



Building owned and managed by  
HEALTHCARE REALTY