

COMMERCIAL OFFICE LEASE

High Traffic Corner Location at 6850 W Fairview Avenue - Boise, Idaho



AVAILABLE

Up to 4,876 SF on Lower Level

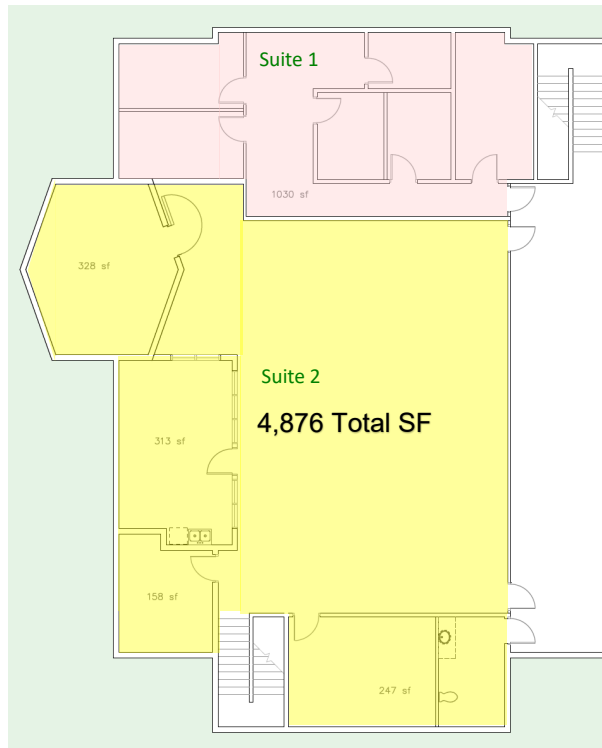
LEASE RATE / TYPE

\$8.00 PSF / NNN*

*Triple nets estimated at \$3.50 PSF

COMMENTS

- Remodeled, former Banner Bank building at intersection of W Fairview Avenue and N Allumbaugh Street
- Located in one of Boise's highest traffic corridors
- Ample parking
- Open lobby with vaulted high ceilings and natural light
- Large, open lower level, fully sprinklered, with 2nd vault/office in view



**ARTHUR BERRY
& COMPANY**

250 W Bobwhite Court, Suite 230, Boise, Idaho 83706 208-336-8000 www.arthurberry.com

David Berry
208-871-1502
david@arthurberry.com

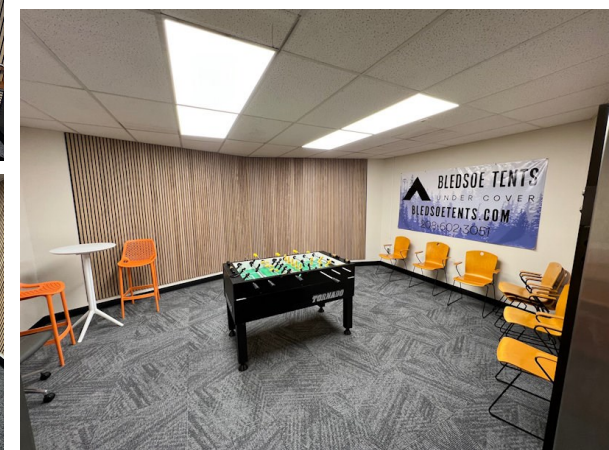
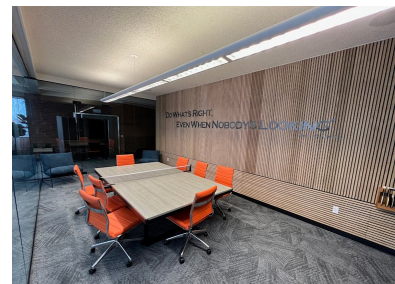
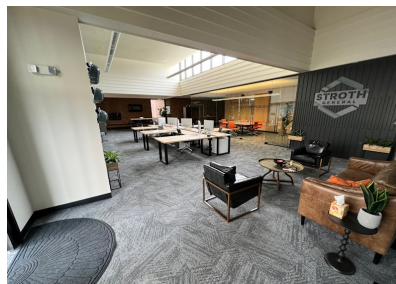
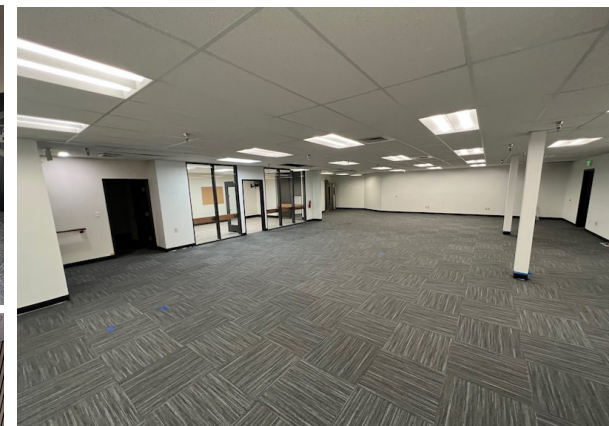
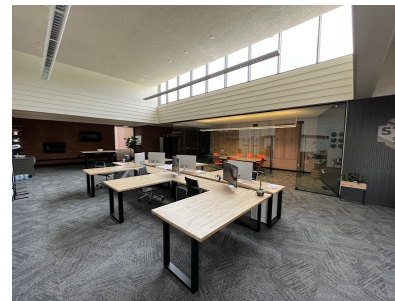
File 5075 / Rev20231115



The above is provided by the Owner. Arthur Berry & Company makes no representation as to its completeness and accuracy. Price and terms subject to change at Owner's discretion.

COMMERCIAL OFFICE LEASE

High Traffic Corner Location at 6850 W Fairview Avenue - Boise, Idaho



COMMERCIAL OFFICE LEASE

High Traffic Corner Location at 6850 W Fairview Avenue - Boise, Idaho

Site Location Map

