

PRIME DEVELOPMENT PARCEL

8924 W Franklin Road - Boise, Idaho (Corner Lot at Franklin and Maple Grove)



SALE PRICE

\$2,200,000 (+/- \$14.00 PSF)

LAND SIZE

Approximately 3.59 Acres (+/-156,380 SF)

CURRENT ZONING

M-1D

COMMENTS

- Last hard corner available in the Franklin Corridor between Milwaukee and Maple Grove
- Strategic development parcel (former residence)
- Good freeway access
- Close to many national retailers, restaurants and Boise Towne Square Mall



View Site Map on Page 2

**ARTHUR BERRY
& COMPANY**

250 W Bobwhite Court, Suite 230, Boise, Idaho 83706 208-336-8000 www.arthurberry.com

Brent Bungard
208-639-6168
bbungard@arthurberry.com

File 5127 / 20220809

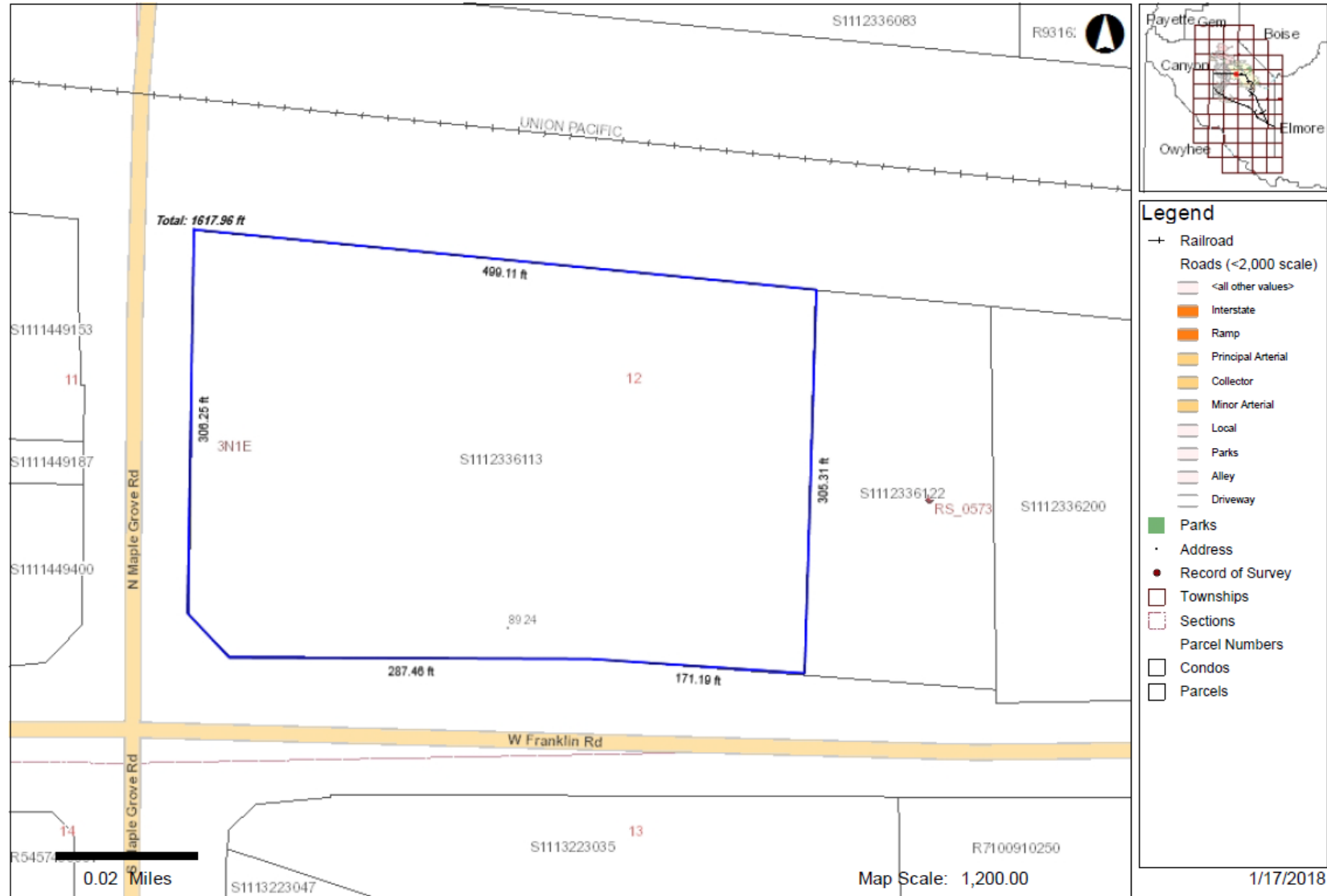


PRIME DEVELOPMENT PARCEL

8924 W Franklin Road - Boise, Idaho (Corner Lot at Franklin and Maple Grove)

Ada County Assessor

This map is a user generated static output from an Internet mapping site and is for general reference only. Data layers that appear on this map may or may not be accurate, current, or otherwise reliable. THIS MAP IS NOT TO BE USED FOR NAVIGATION OR LEGAL PURPOSES.



**ARTHUR BERRY
& COMPANY**

250 W Bobwhite Court, Suite 230, Boise, Idaho 83706 208-336-8000 www.arthurberry.com

Brent Bungard
208-639-6168
bbungard@arthurberry.com



The above is provided by the Owner. Arthur Berry & Company makes no representation as to its completeness and accuracy. Price and terms subject to change at Owner's discretion.